



black splitter

CONE SPLITTER | EXCAVATOR SPLITTER | WOOD SPLITTER



NEW: S4
THE FUTURE

DIRECT MOTOR-DRIVEN

BLACK SPLITTER S1

Weight:

106 kg

Cone:

chromium steel cone tip, double-edged threads, 200 mm dia.
two parts, 24 mm thread pitch

Hydraulic Motor:

180 - 240 bar,
max. torque 2338 Nm

Motor Shaft:

100 mm dia., bearing-mounted and sealed



0,8 - 6
metric
tons

BLACK SPLITTER S1X

Weight:

208 kg

Cone:

chromium steel, double-edged threads, 245 mm dia. (optional 300 mm dia.), two parts, 24 mm thread pitch

Hydraulic Motor:

max. torque 4020 Nm

Motor Shaft:

120 mm dia., special steel, bearing-mounted and sealed

6 - 18
metric
tons

**POWER
EXTREME**



DIRECT MOTOR-DRIVEN

BLACK SPLITTER S2

Weight:

119 - 128 kg

Cone:

chromium steel, double-edged threads, 200 mm dia.
two parts, 24 mm thread pitch

Hydraulic Motor:

optional max. torque
2338 - 2475 - 4020 Nm

Motor Shaft:

100 mm dia.,
bearing-mounted and sealed

1 - 6
metric
tons

BLACK SPLITTER S2X

Weight:

152 - 161 kg

Cone:

chromium steel, double-edged threads, 245 mm dia.
two parts, 24 mm thread pitch

Hydraulic Motor:

optional max. torque
2338 - 2475 - 4020 Nm

Motor Shaft:

100 mm dia.,
bearing-mounted and sealed

6 - 10
metric
tons



WITH GRAB ARMS

BLACK SPLITTER SG1

Weight:

166-178 kg

1,5 - 6
metric tons
optional
8 metrics tons

Cone:

chromium steel, double-edged threads
200 mm dia., two parts, 24 mm thread pitch

Hydraulic Motor:

optional max. torque
2338 - 2475 Nm

Motor Shaft:

100 mm dia., bearing-mounted and sealed

Hydraulic Cylinders:

2 x 3500 kg compressive force

Grab Arms:

Hardox steel
mounted in sinter bushings
surface-hardened pins and bolts

Various Models Possible:

for excavators with 1 or 2 auxiliary
hydraulic control circuits

EXTRA: Special system to enable
splitting within the grab arms

BLACK SPLITTER SG3

Weight:

400 kg

Cone:

chromium steel, double-edged
threads, 245mm dia.
two parts, 24 mm thread pitch

Hydraulic Motor:

max. torque 2475 Nm

Motor Shaft:

100 mm dia., bearing-mounted and
sealed

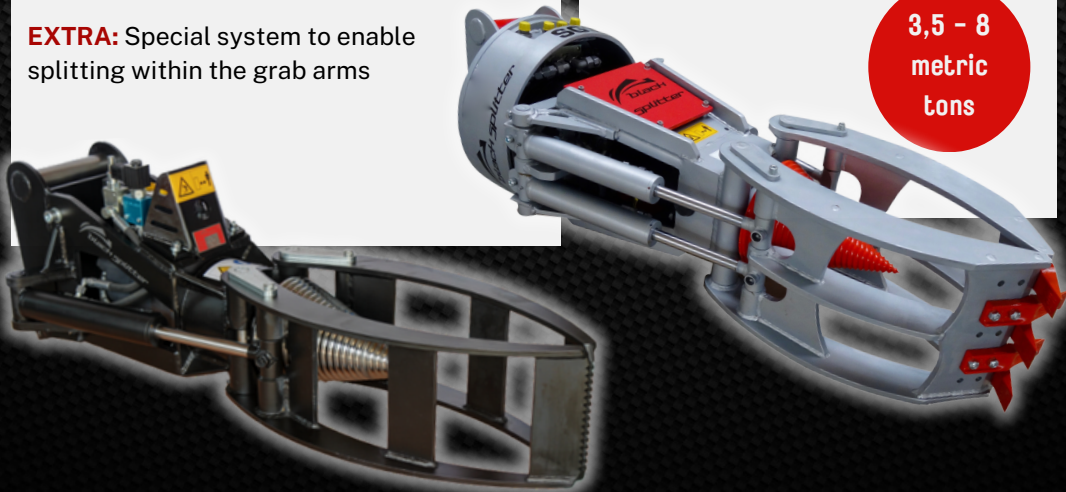
Hydraulic Cylinders:

4 x 3500 kg compressive force

Grab Arms:

Hardox steel with steel teeth
surface-hardened pins and bolts

3,5 - 8
metric
tons



PLANETARY GEARS

BLACK SPLITTER SB

Weight:

240 kg

Cone:

chromium steel, quadruple-edged threads
300 mm dia., two parts, 48 mm thread pitch

Hydraulic Motor:

180 - 240 bar, max. 220 l/min.

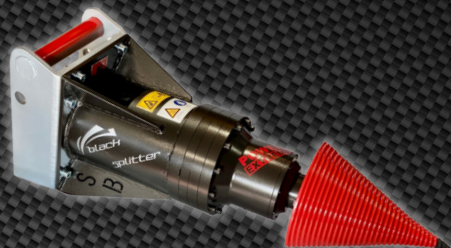
Planetary Gears:

max. torque 12000 Nm

Motor Shaft:

100 mm dia., tool steel,
bearing-mounted and sealed

3 - 12
metric
tons



BLACK SPLITTER SBX

Weight:

620 kg

Cone:

chromium steel, quadruple-edged threads
400 mm dia., 48 mm thread pitch

Hydraulic Motor:

max. 320 bar, max. 268 l/min.

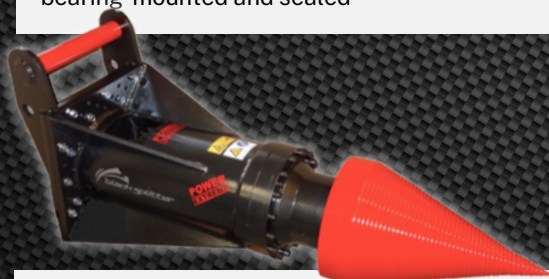
Planetary Gears:

max. torque 30000 Nm

Motor Shaft:

130 mm dia., tool steel,
bearing-mounted and sealed

12 - 28
metric
tons



BLACK SPLITTER SBXX

Weight:

890 kg

Cone:

chromium steel, quadruple-edged threads
400 mm dia., 48 mm thread pitch

Hydraulic Motor:

max. 340 bar, max. 424 l/min.

Planetary Gears:

max. torque 60000 Nm

Motor Shaft:

170 mm dia., tool steel,
bearing-mounted and sealed

25 - 40
metric
tons



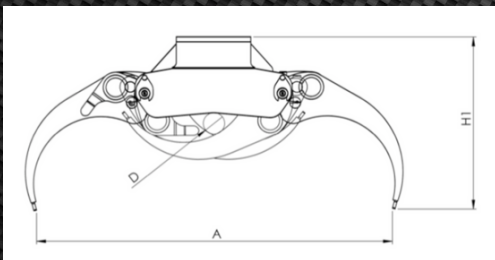
LOG GRAB



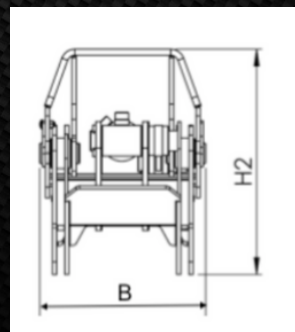
LOG GRAB

- is characterized by robustness, durability and easy handling
- also suitable for large trees thanks to its high load capacity
- grapple made from high-performance steel
- optionally available with rotator and flange
- cylinder max. 250 bar

available for excavators from 1 - 7 metric tons



Log Grab		BS 16	BS 19	BS 22	BS 26
Crane	Ton/m	2 - 6	6 - 8	8 - 10	10 - 12
Excavator	Ton/m	1 - 3	3 - 5	5 - 6	6 - 7
Weight	kg	52	92	109	195
Area	m ²	0,16	0,19	0,22	0,26
Force	daN	775	1060	1275	1640
Max. Load	kg	1000	1800	2500	3000
Max. Pressure	bar	250	250	250	250
A	mm	1100	1300	1400	1550
B	mm	262	326	326	450
H1	mm	582	625	648	760
H2	mm	385	444	498	540
D	mm	57	77	118	100



FINGER GRAB

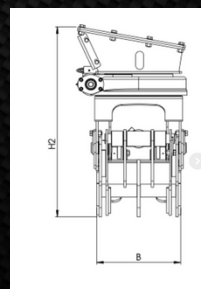
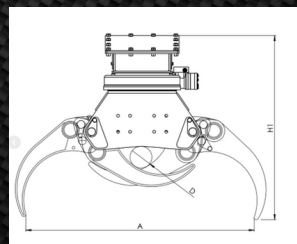
available for
excavators
From 1 - 12
metric tons

FINGER GRAB

- available including mounting plate, turntable, motor, valve and hoses
- high flexibility thanks to five fingers
- specially designed for demanding applications such as grabbing roots, rubble, scrap or bushes, etc.
- high closing forces, load-holding valves and pressure accumulator
- complete closing possible thanks to overlapping fingers



Finger Grab		BSX 16	BSX 22	BSX 26
Excavator	Tons	1 - 6	4 - 8	8 - 12
Weight	kg	162	238	430
Area	m ²	0.16	0.22	0.26
Force	daN	800	1275	1700
Max. Load	kg	1000	2500	3000
Max. Pressure	bar	250	250	250
A	mm	1100	1398	1581
B	mm	288	343	417
H1	mm	770	896	1046
H2	mm	590	770	943
D	mm	58	120	136



FELLING GRAB

NEW – THE BLACK SPLITTER FELLING GRAB

- for effortless cutting and felling of trees
- clean cut without splintering
- designed for carriers up to 10 tons
- high cutting frequency for branches and trunks up to 300 mm
- robust construction made of Hardox steel
- sharp blades for precise and clean cutting

NEW

Felling Grab		JSM 30	JSM 50	JSM 80
Excavator	tons	2-3	4-6	8-10
Weight	kg	160	265	420
Max tree diameter	mm	400	564	607
Max. opening width	mm	120	200	300
Pressure	mpa	25	25	25
Max. Pressure	mpa	31,5	31,5	31,5
Length	mm	750	950	1150
Width	mm	450	690	810
Height	mm	430	530	615



THE MULTIFUNCTIONAL S2



S2 BACK PLATE WITH ROOT PLOW

- made of Hardox 500 in 12 mm thickness
- for applications with high wear resistance
- both from the side, rear and bottom and can be used at different heights
- can be integrated with the Black Splitter S2 or SG1 without additional excavator mount

S2 WITH PLANT AUGER

- interchangeable cutting edges & drill bits
- available in diameter 400 mm
- armored side edges



S2 WITH RAKE

- available with 5 or 7 prongs
- made of Hardox steel

S2 WITH FELLING GREB

- for splitting and cutting wood to length



quick & easy
attachment
to the S2

S2 WITH LOG GRAB ADD-ON KIT

- for splitting and transporting wood



can also be used with all accessories:

rotary cultivator, soil anchor, soil auger, mixing drum, sieve basket, weed brush and all grapples

ACCESSORIES

AUGER

ideal solution for precise and efficient drilling work

- available with carbide teeth or wing cutting edges
- holder with SW41 hexagon
- usable length 1000 mm / extension possible
- drill head with 2 cutting edges and hardfacing
- available in diameters of 100 mm, 200 mm and 300 mm
- suitable adapters available with or without universal joint



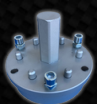
custom
manufacture
also possible



GROUND SCREW

enables an object to be erected vertically without concreting - available in sizes 800 mm, 1000 mm and 1200 mm with the following accessories

- Support base: galvanized support for post and wood protection and concreteless foundation construction
- Tension hook: galvanized hook for fastening tents and marquees
- Post supports: galvanized supports for wood protection, available in diameters: 100 mm, 120 mm, 140 mm



Screw-in
adapter

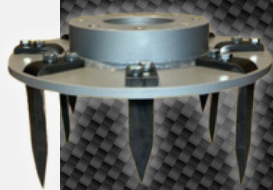


ACCESSORIES

ROTARY CULTIVATOR

suitable for loosening, scarifying and aerating soils

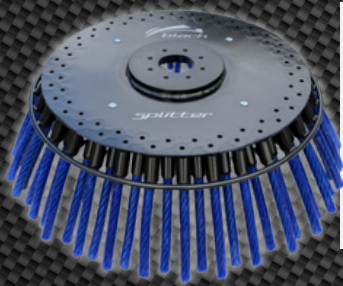
- 8 double-edged blades made from high-quality steel
- can be rotated in both directions



WEED BROOM

optionally available with steel or plastic brushes; available in various diameters

750 mm with 32 brushes
950 mm with 64 brushes

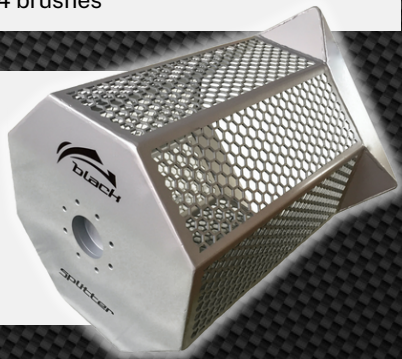


SCREENING BASKET

Sieve basket for washing gravel and sieves of topsoil

**Customized design possible*

Length: 680 mm
Diameter: 500 mm



MIXING DRUM

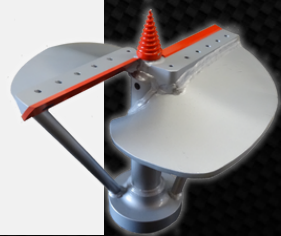
For mixing concrete and ready for direct pouring

Size: 165 l



STUMP GRINDER

- available in 3 diameters - 300 mm, 400 mm and 500 mm
- knife attachments individually interchangeable
- blade set available as smooth blade or Hardox blade
- replaceable spare tip with 4 mm or 8 mm feed pitch available (depending on tree species)





HEAD OFFICE

BLACK SPLITTER GMBH

Owner: Siegfried Brehm
Zum Ritzhagen 9
34508 Willingen

Tel.: +49 (0) 5632 / 4594
Fax: + 49 (0) 5632 / 966621
Mob.: +49 (0) 160 / 5559797
E-Mail: info@blacksplitter.de

BRANCH OFFICE

BLACK SPLITTER GMBH

Am Ziegelgrund 31
34497 Korbach

Tel.: +49 (0) 5631 / 6202140



Follow us
[@blacksplitter](https://www.instagram.com/blacksplitter)

